

Glamor Video Panel 4096

使用说明书



感谢你使用本公司产品，请保存好说明书以备来时使用

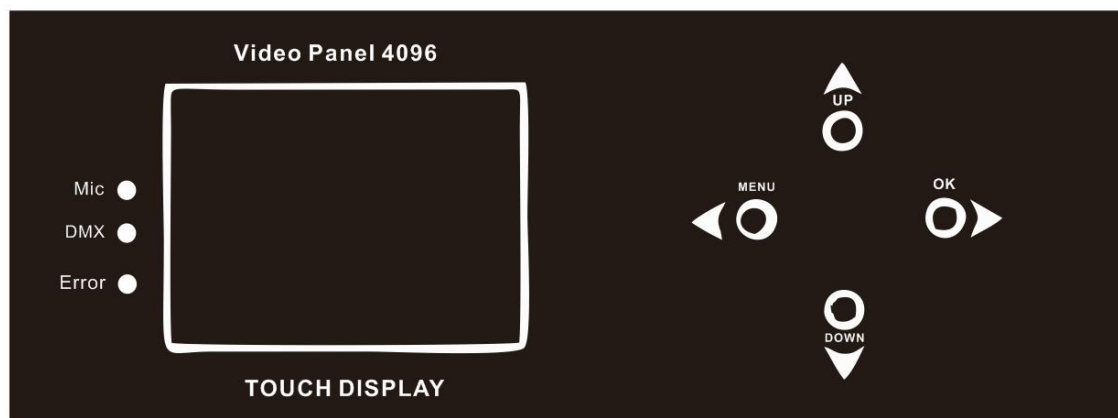
规格说明:

- DMX 通道: 15 DMX 通道
- P6 显示屏
- LED 光源: 4096 棵 SMD5050 RGB LED
- 无极 XY
- 内置丰富效果, 可调效果速度
- 0%~100%线性调光
- 触摸显示屏
- 运行模式:DMX 512,Art-net,自动,手动
- PFC 电源
- 精准定位
- 过热保护
- 可适用于任何灯光软件
- 电源输入: AC90~240V,50/60HZ
- 功率: Max 200W
- 产品尺寸: 48 x 28 x 62 cm
- 纸箱尺寸: 61 x 41 x 75 cm
- 净重: 15.5 KG
- 毛重: 17KG

产品图



显示菜单



- DMX: 当有 DMX 信号进入，指示灯会闪烁
- ERR: 当灯具有错误时，指示灯会闪烁
- Mic: 声控
- Menu: 菜单
- Up: 向上
- Down: 向下
- OK: 确定

后面板



The Connection

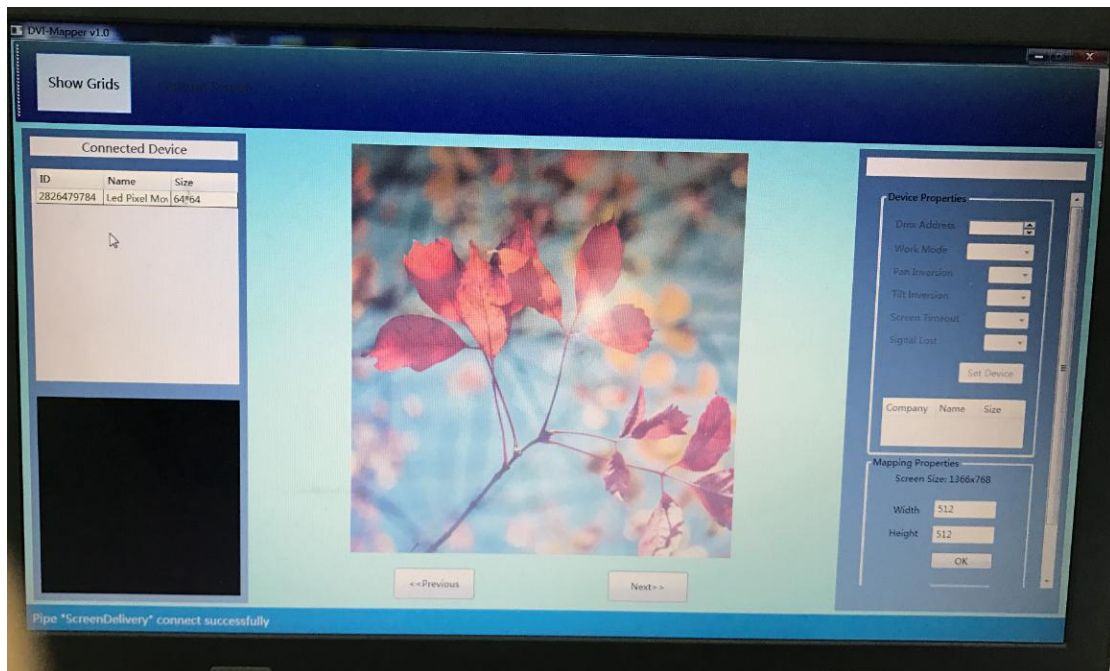
Powercon Blue: Use the power cable connect the light

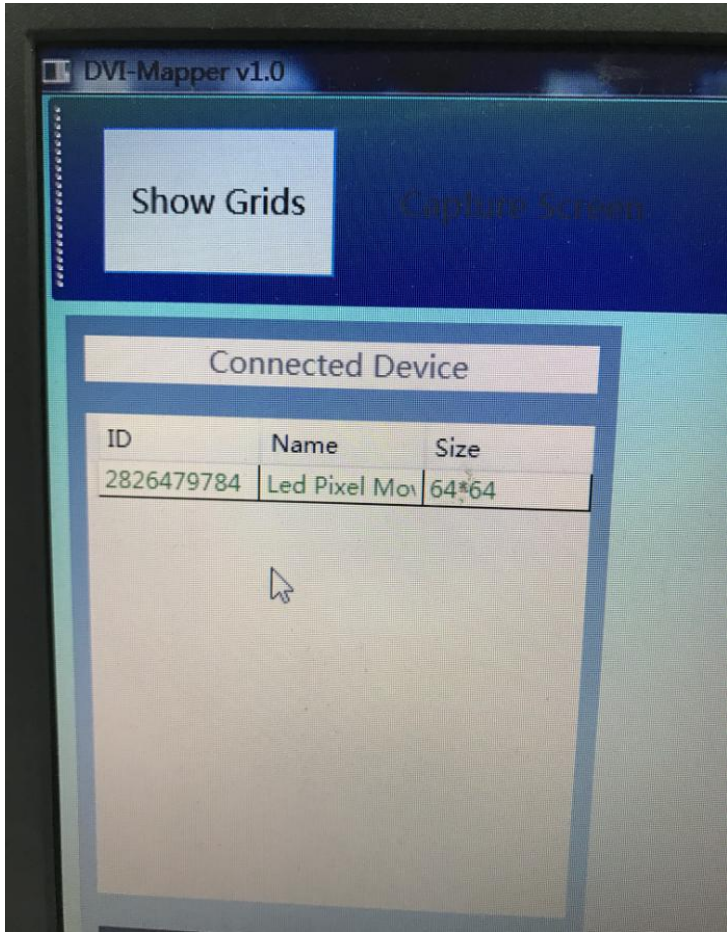
Powercon White: Use powercon cable to supply the power to another light

3pin&5pin XLR connector: Use DMX Controller to connect the light. It can control the XY movement, built-program.

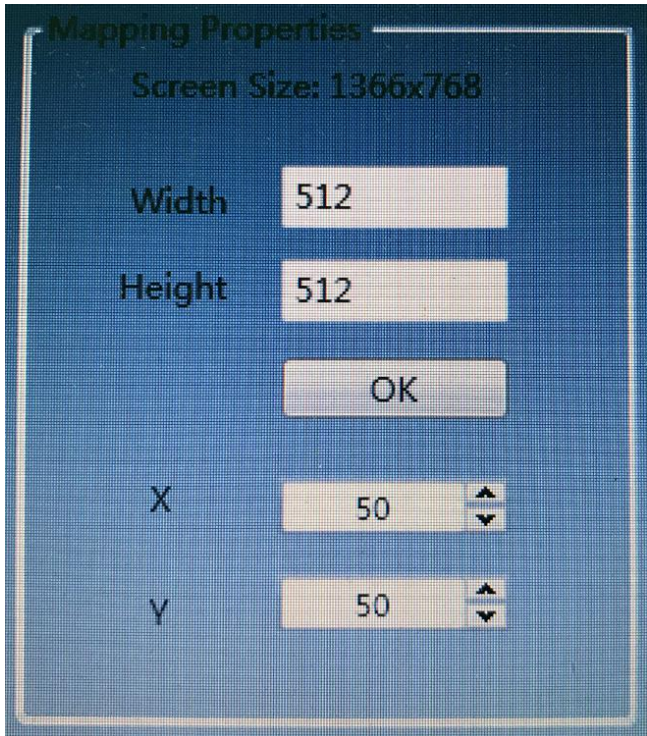
Ethernet: Use Cat5 connect with computer to play the video and effect through software

DVI Mapper

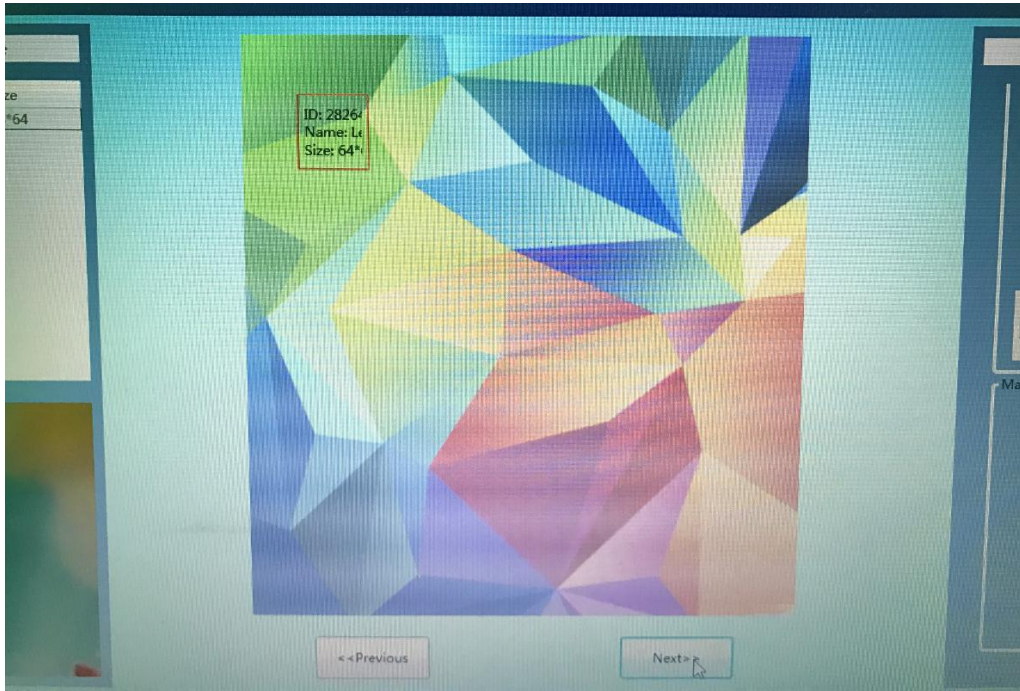




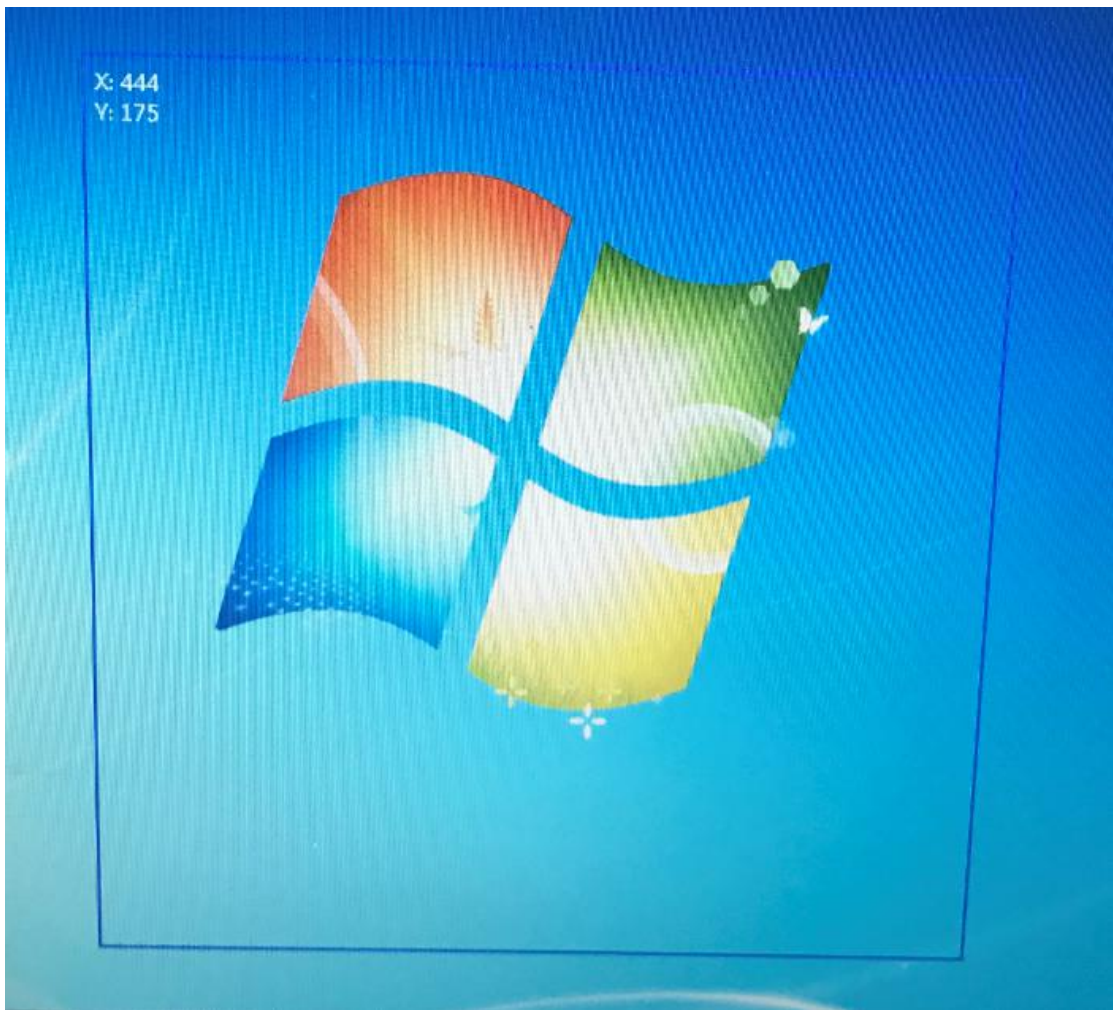
DVI Mapper can auto recognize the device.



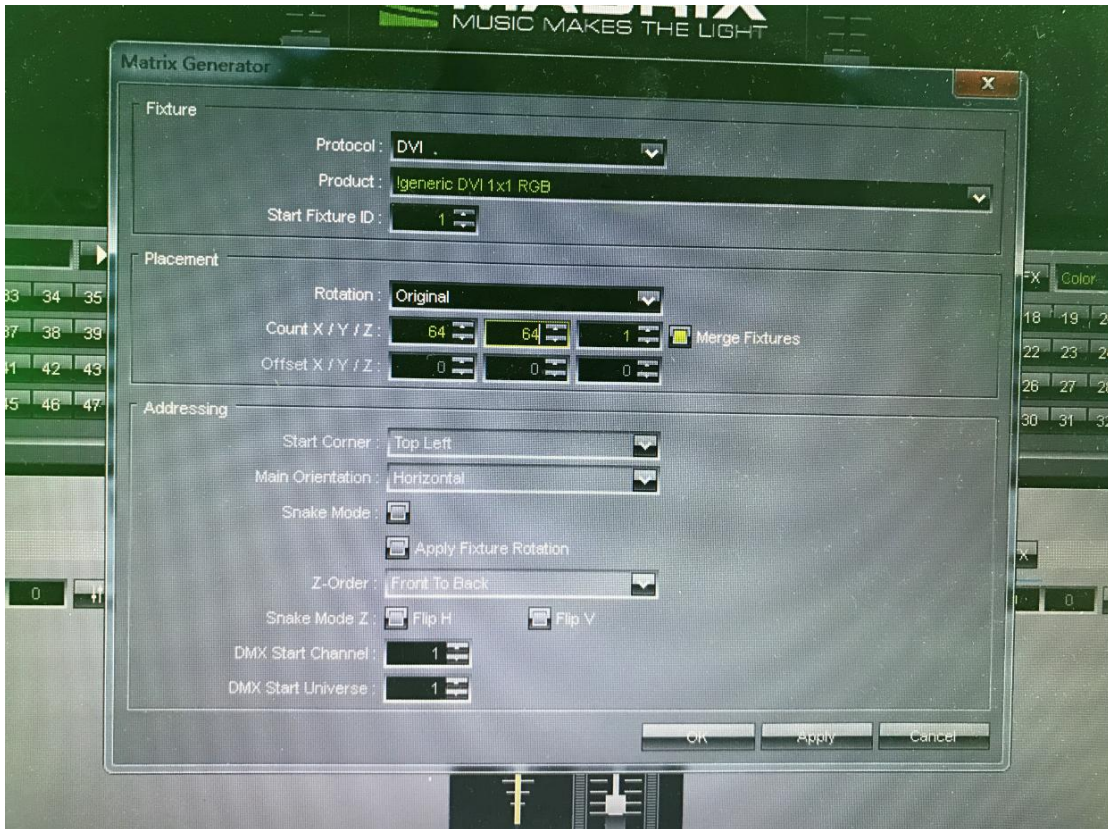
Set the video panel size, for example if 10pcs GVP4096, it will be Width: 640, Height: 640



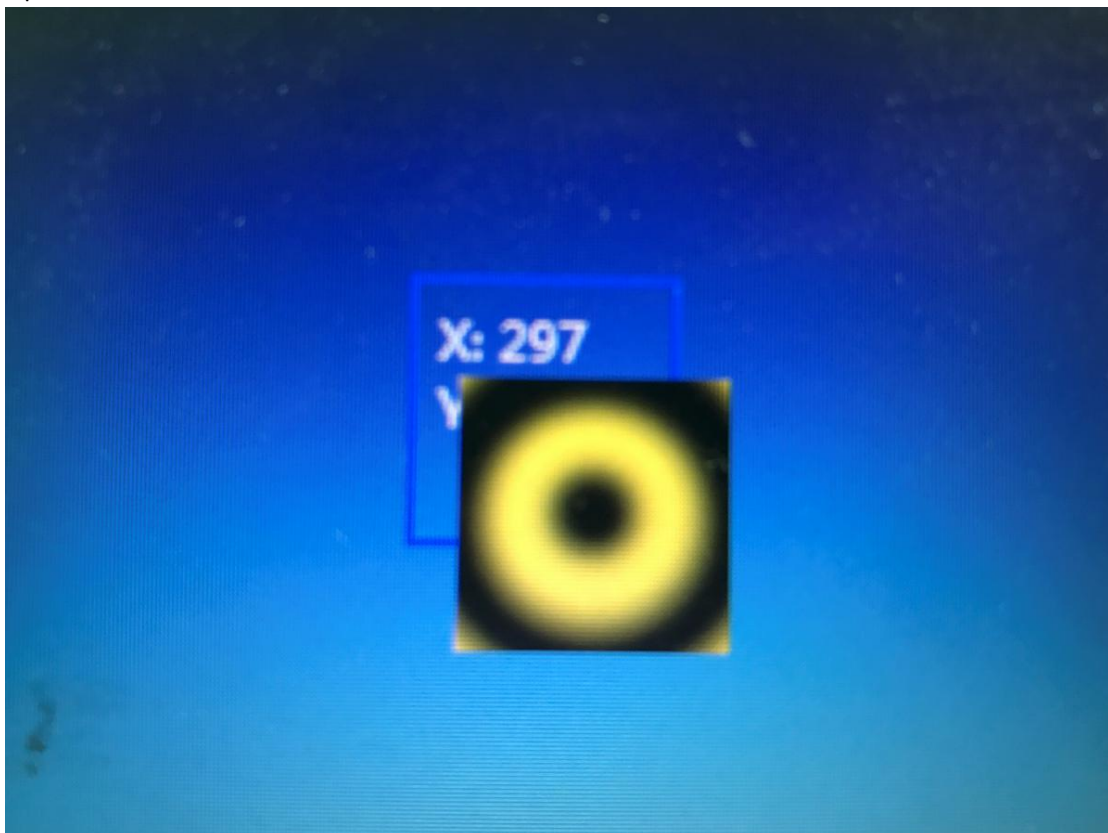
Draw the connected device to this window, you can move at any position in this image.



.After set well, the computer will show the capture window.



Open the Madrix, set the Matrix Generator, choose the DVI, set the effect.



Then show two windows, one is from the Madrix, one is DVI mapping, Make the two windows in same position. For example, if not in same position the light will show like this:



It can use router to connect the light and computer, then no need set the IP address and universal.

Menu



DMX: Choose the DMX Address

Network: Set the Network address, Net Mask and Universe

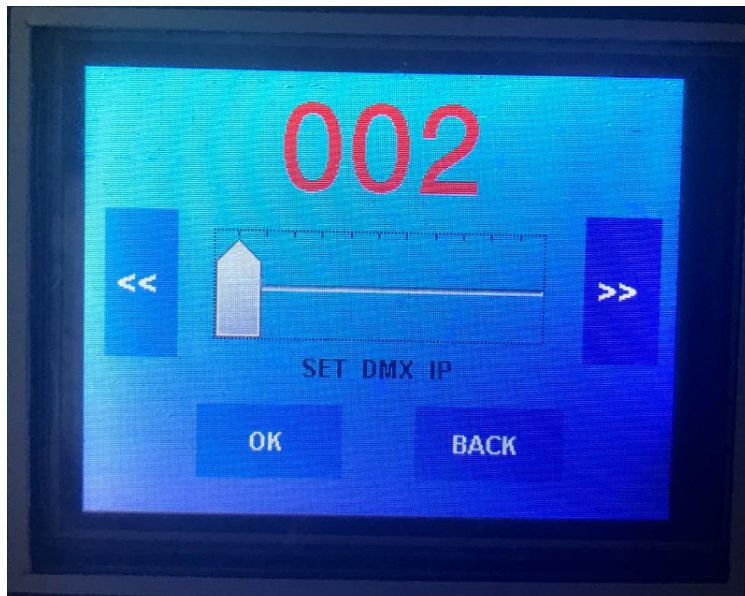
WorkMode: Choose the work Mode

Setting: Set the light parameter

Reset: Reset the light

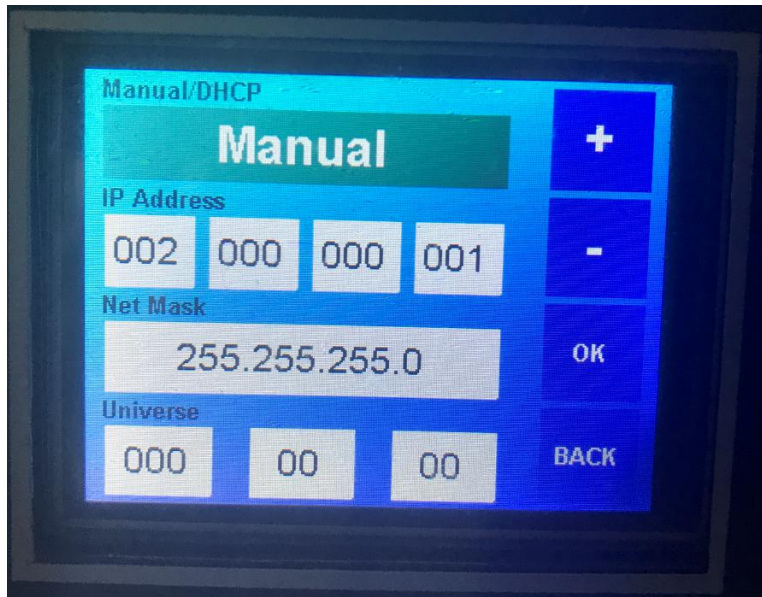
Home: Return to initial interface

DMX Address Set

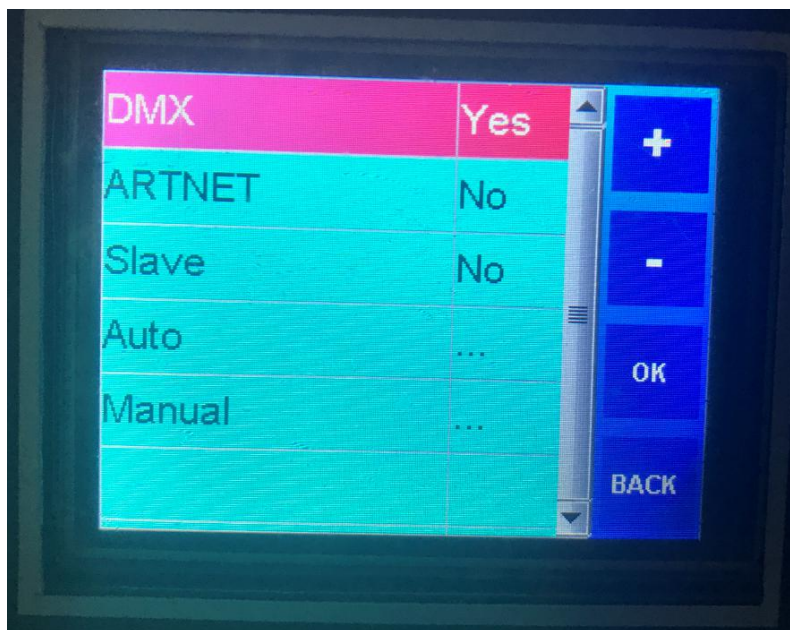


Push the UP or Down to choose the DMX Address, after push OK to confirm.

Network Set



Work Mode Set



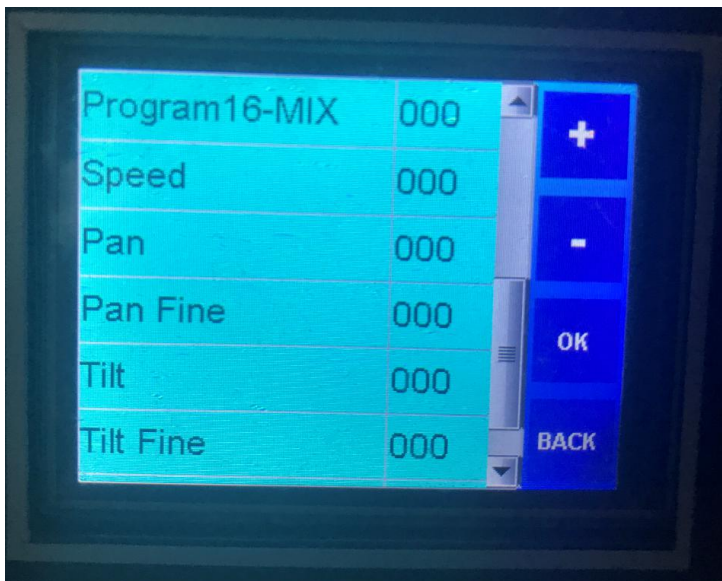
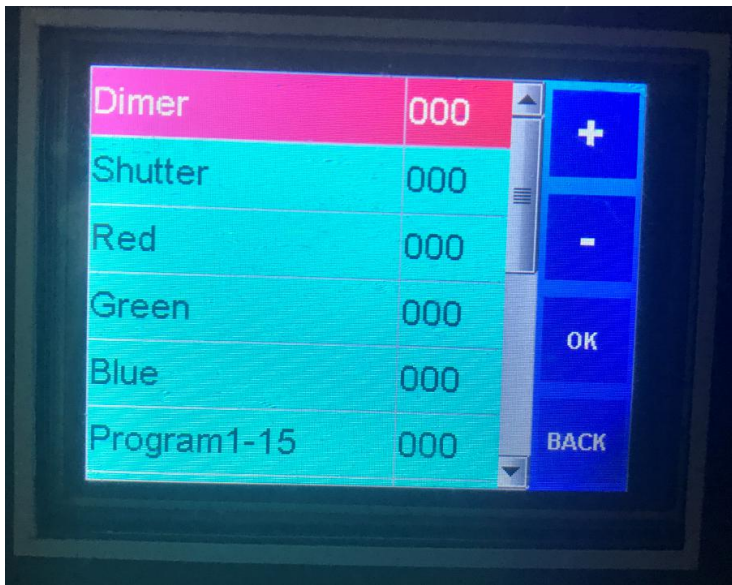
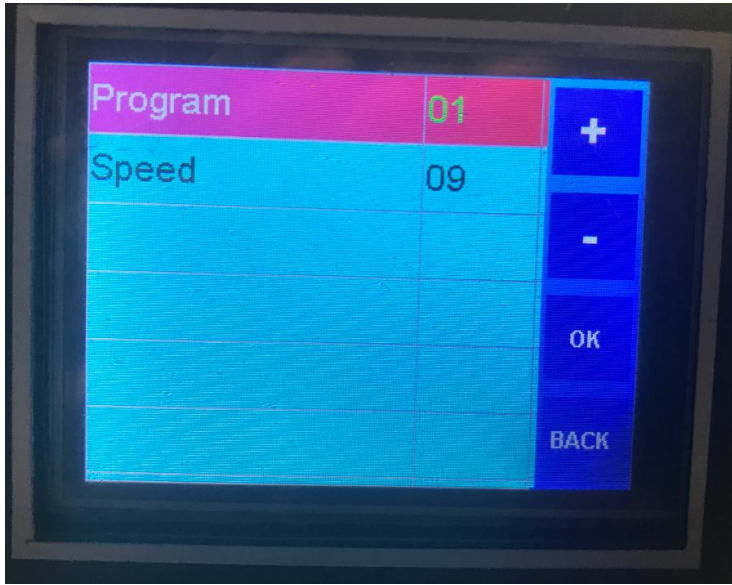
DMX: DMX Mode

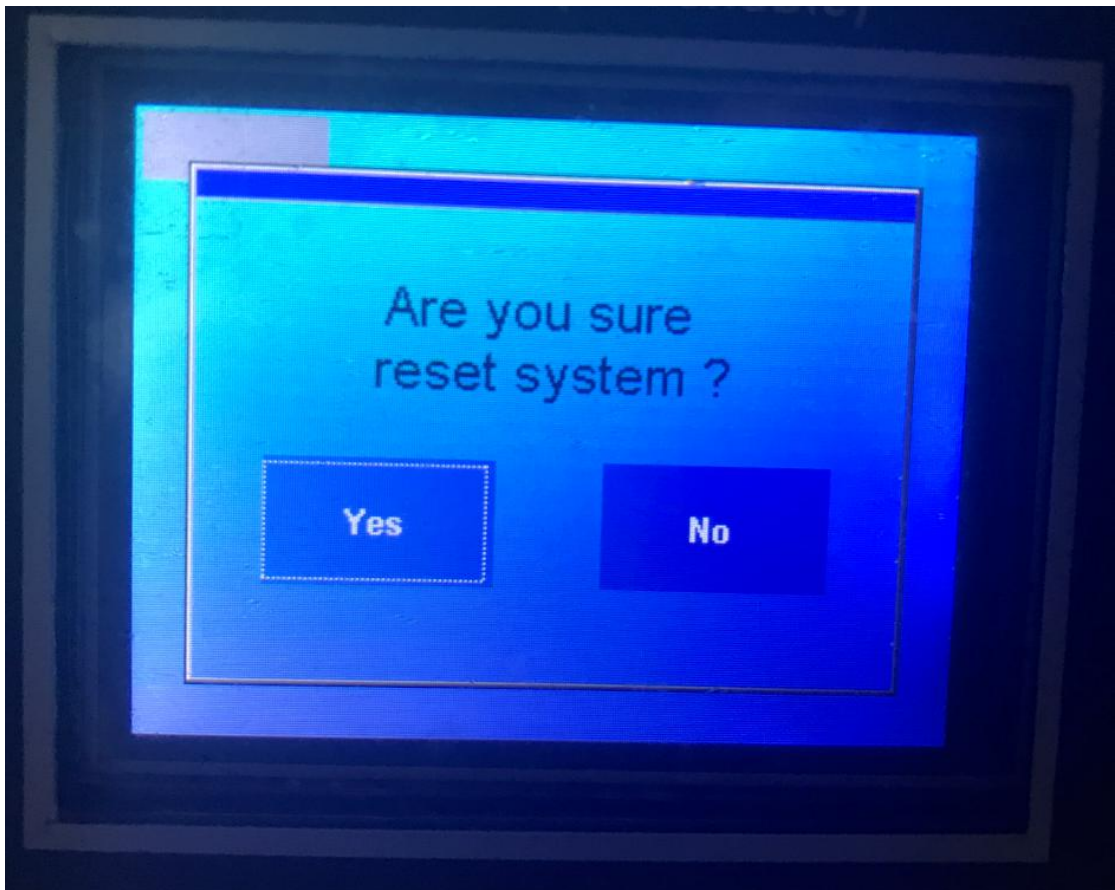
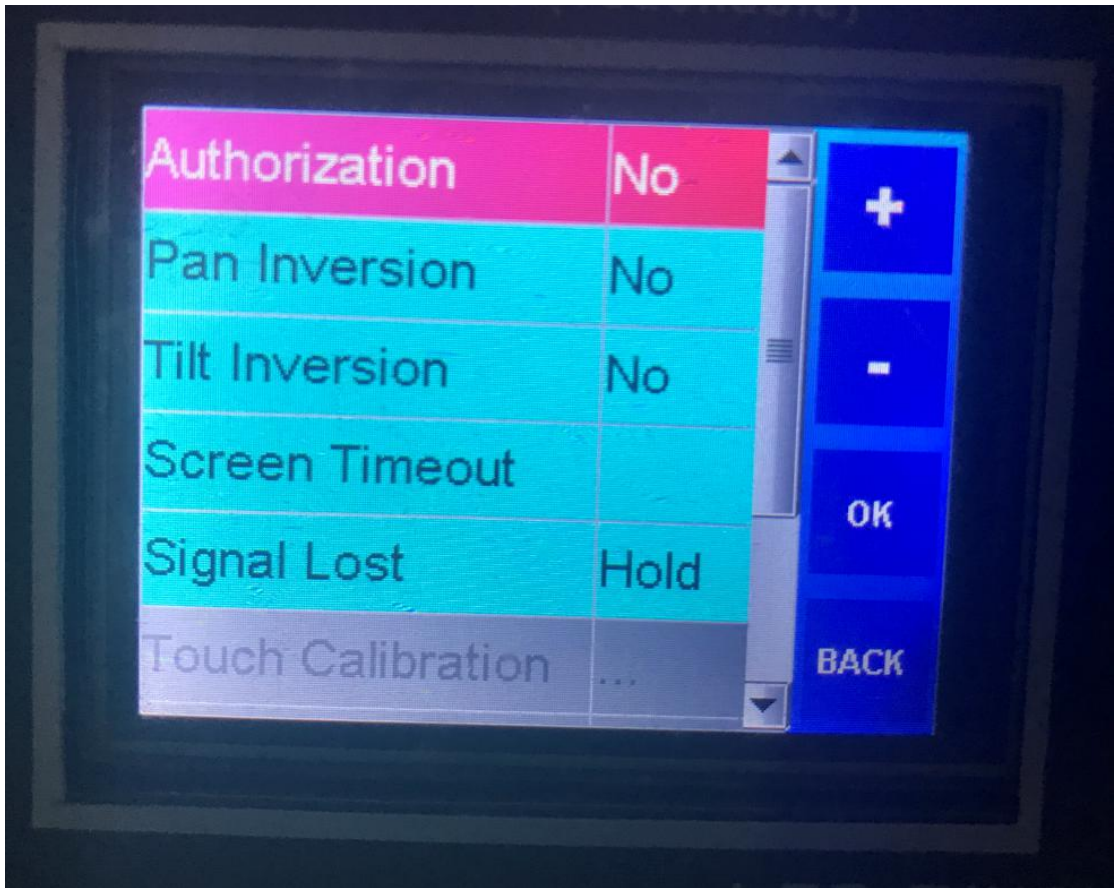
ARTNET: Internet work Mode

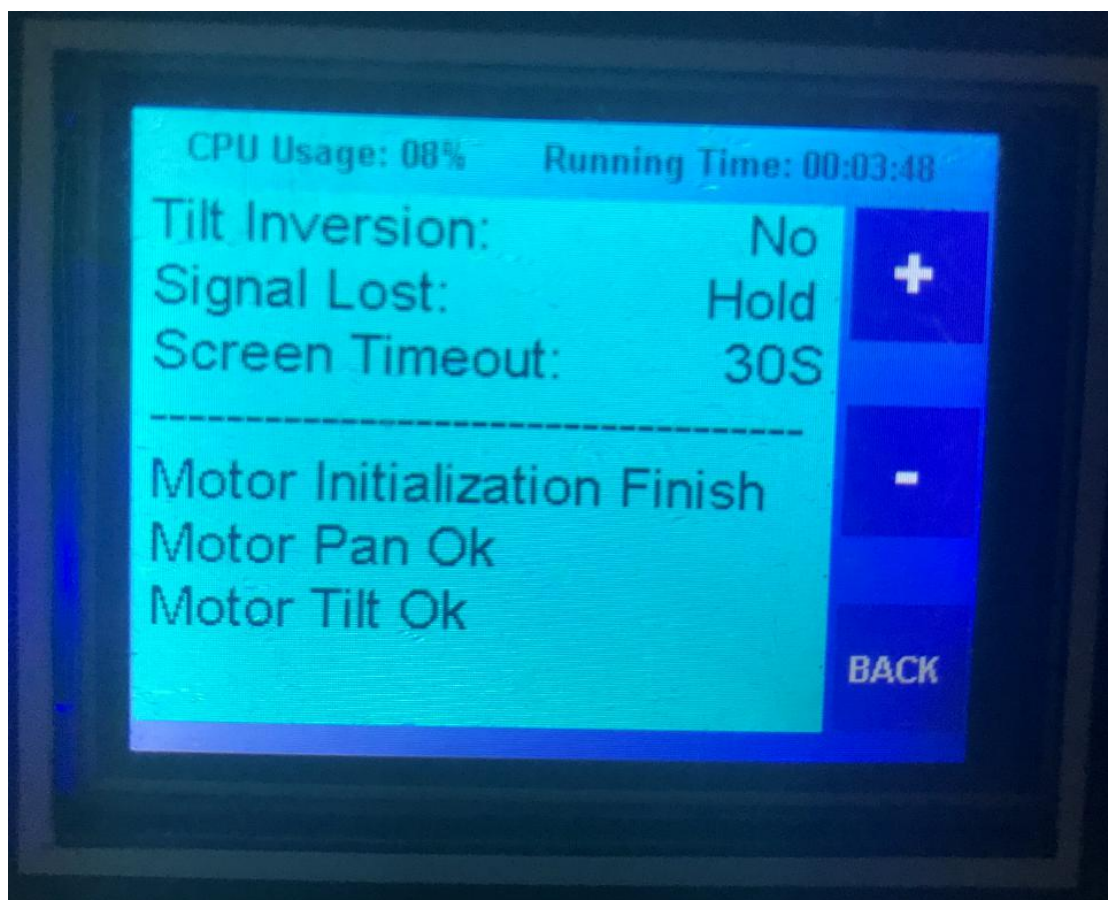
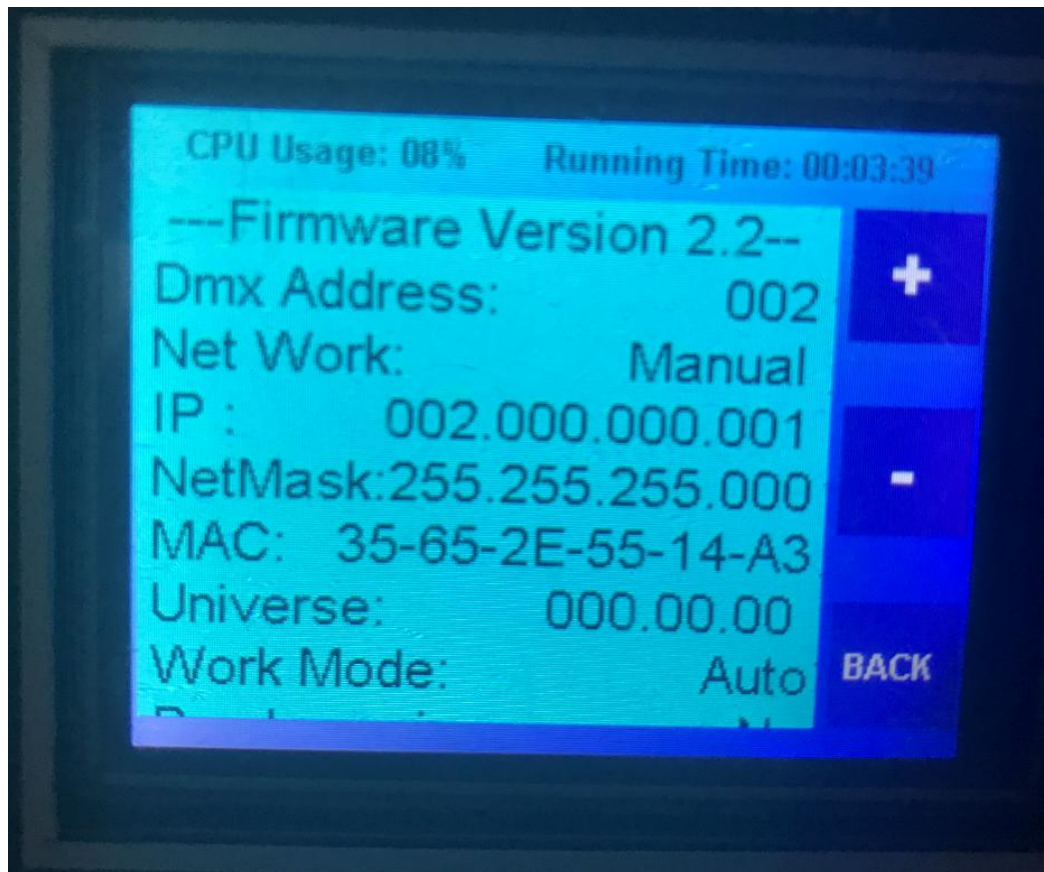
Slave: Slave Mode

Auto: Auto Run Mode

Manual: manual set the light value







DMX 通道表:

CH1	调光
CH2	频闪
CH3	红
CH4	绿
CH5	蓝
CH6	内置程序 1
CH7	内置程序 2
CH8	内置程序速度
CH9	X
CH10	X 微调
CH11	Y
CH12	Y 微调
CH13	XY 速度
CH14	复位
CH15	切换 DMX 和 ARTNET 模式